



# Cyber Risk Aware

Creating your human firewall!



**Stephen Burke, CISM**  
Founder & CEO

[stephen@CyberRiskAware.com](mailto:stephen@CyberRiskAware.com)



# Human Error



95% the Root Cause of Cyber Incidents

**RANSOMWARE**

**DATA BREACHES**



# Ransomware

## Chimera® Ransomware



You are victim of the Chimera® malware. Your private files are encrypted and can not be restored without a special key file. Maybe some programs no longer function properly!

Please transfer Bitcoins to the the following address to get your unique key file.

**Address: 1HqoNfpAJFMy9E36DBSk1ktPQ9o9fn2RxX**

**Amount: 0,93945085 Bitcoins**

For the decryption programm and additional informations, please visit:

<https://mega.nz/ChimeraDecrypter>

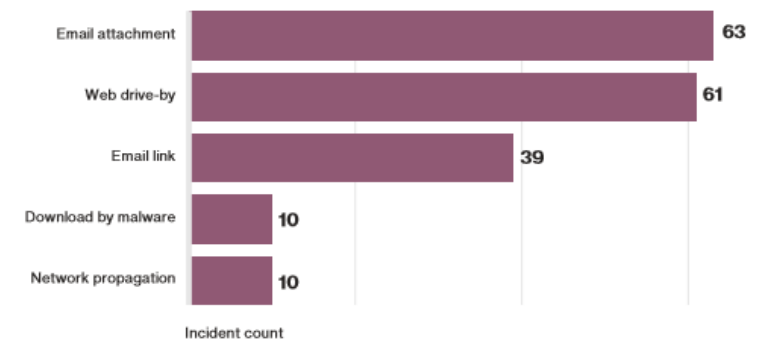
If you don't pay your private data, which include pictures and videos will be published on the internet in relation on your name.

Take advantage of our affiliate-program!  
More information in the source code of this file.

### Statistics

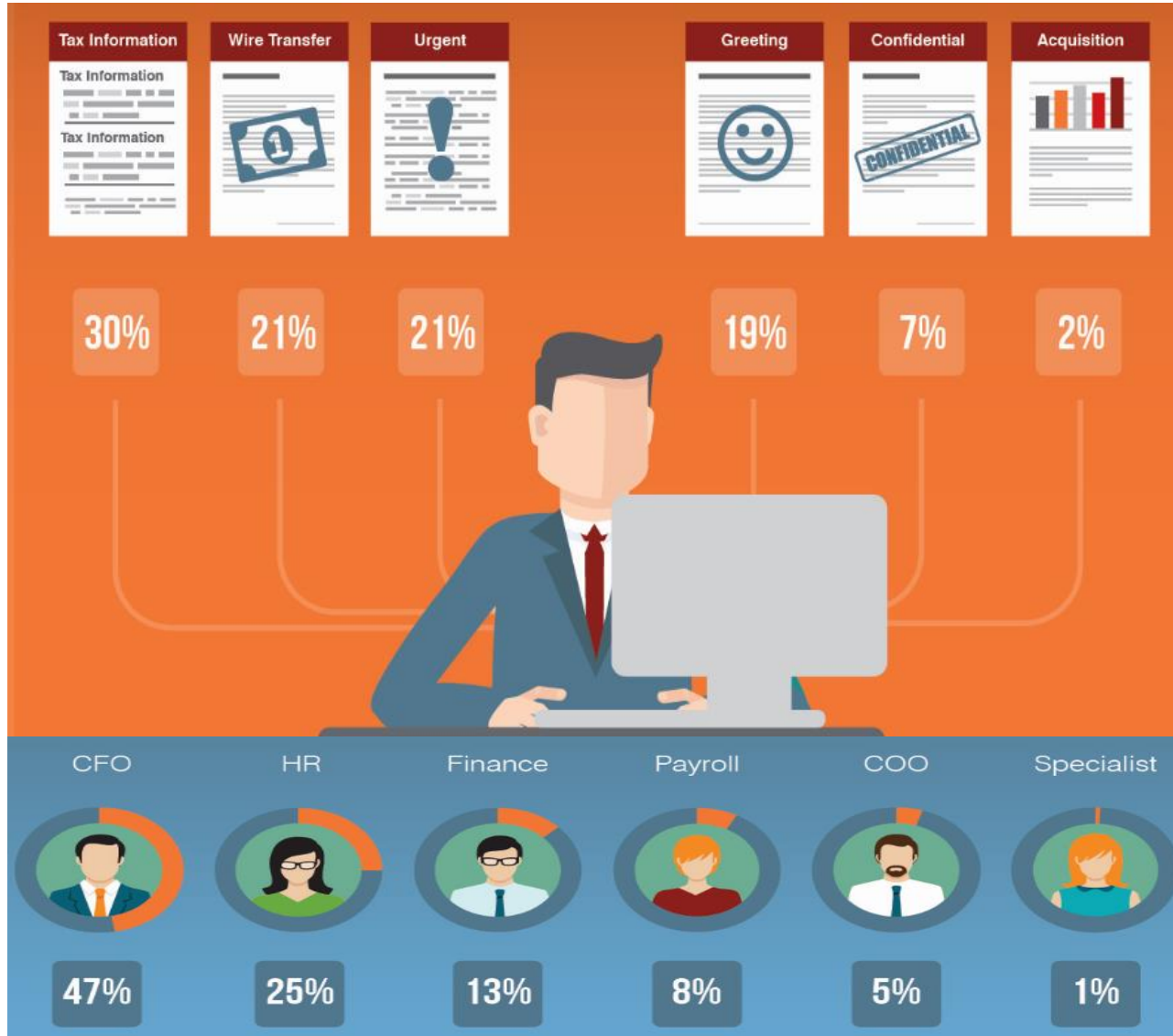
- **68% Phishing**
- **\$1.2+ Billion in ransom**
- **72 Hours to Pay (average)**  
**(Will be honoured)**
- **Personal \$500-700**
- **Business \$000's**

### Sources of Infection



Source: Verizon DBIR

# CEO Fraud

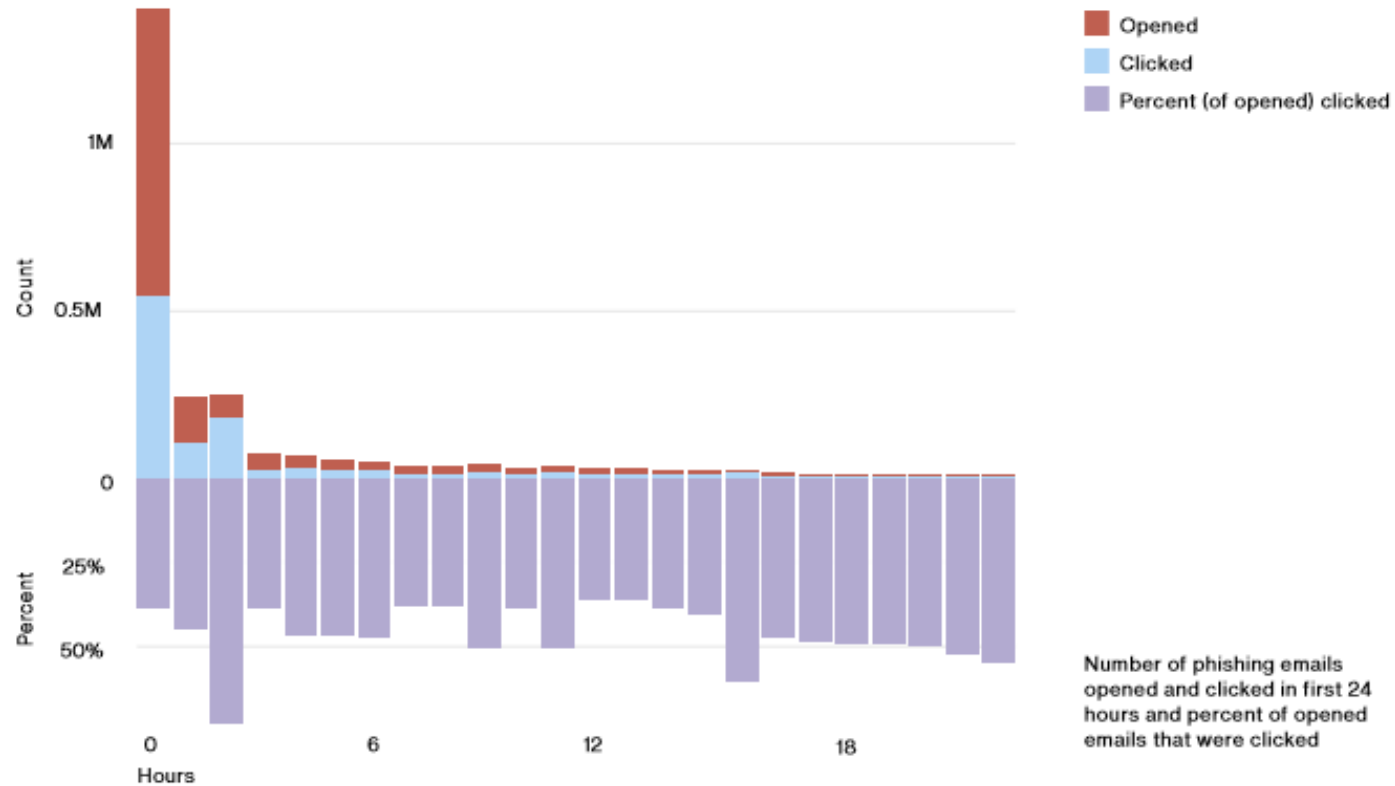


Since 2013

- 17,000+ Companies Affected
- \$3.1 Billion in Fraud

Source: FBI, Proofpoint

# Mock Phishing



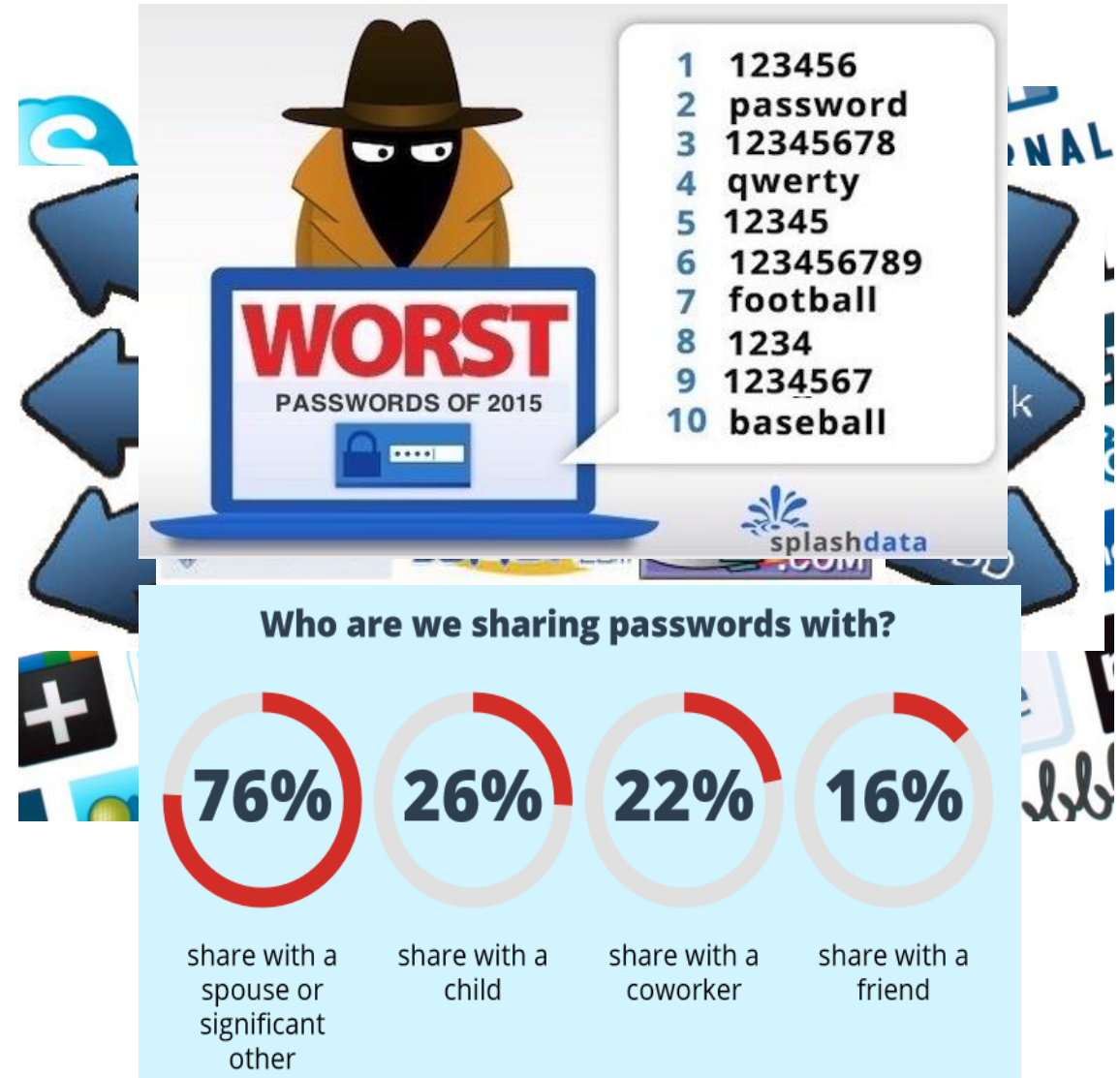
## Key Findings

- 30% of all emails opened  
(+6% on 2014)
- Median Time - 1 minute 40 secs
- 13% then clicked  
(+1% on 2014)
- Median Time- 3 minutes 45 secs
- 9-10 AM Best Time on a Tuesday

Source: Verizon DBIR 2016,  
8M test emails

# Risky User Behaviour

- Weak Password Security
- Poor Data Protection
- Social Media
- Downloading Free Software





# Phishing And Training



CyberRiskAware Dashboard - Welcome to your CyberRiskAware Dashboard. Below is a snapshot of your organisation's resources

Dashboard

License: Full License

**5**  
Users

User Administration

**5**  
User Groups

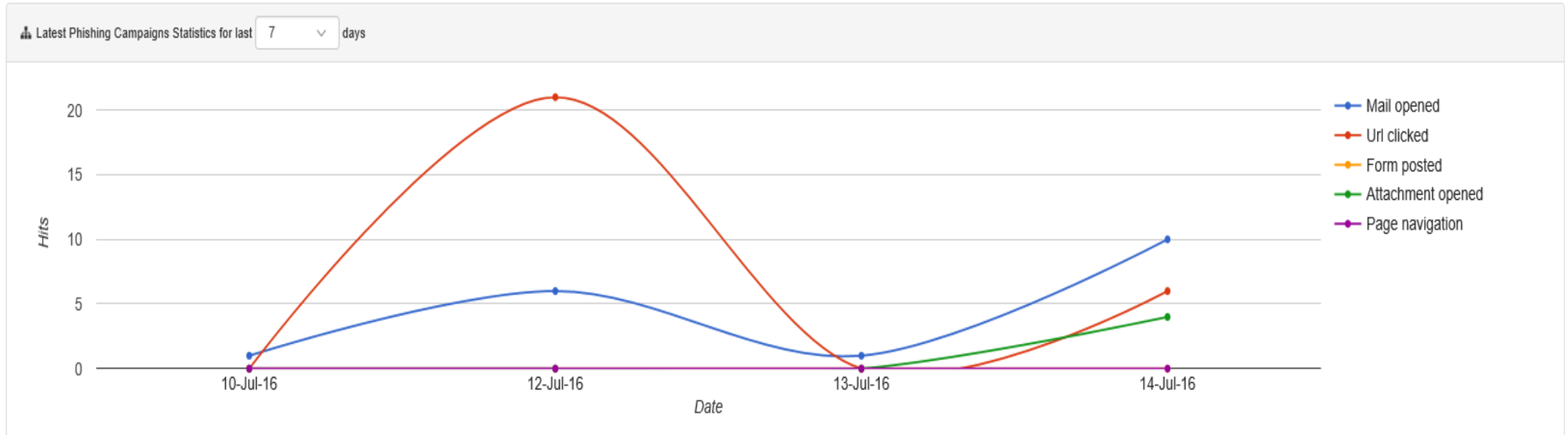
View Details

**15**  
Training Campaigns

View Details

**105**  
Phishing Campaigns

View Details



- Dashboard
- User Profile
- Organisation Profile
- Users
- Organisation Timeline
- Phishing Campaigns
- Training Campaigns
- Token Manager
- Notifications
- Reports and Stats
- Configuration

# Unified Security Education Platform



User Behavior Analytics



Network Behavior Analytics



Endpoint Behavior Analytics



Next-Gen SIEM



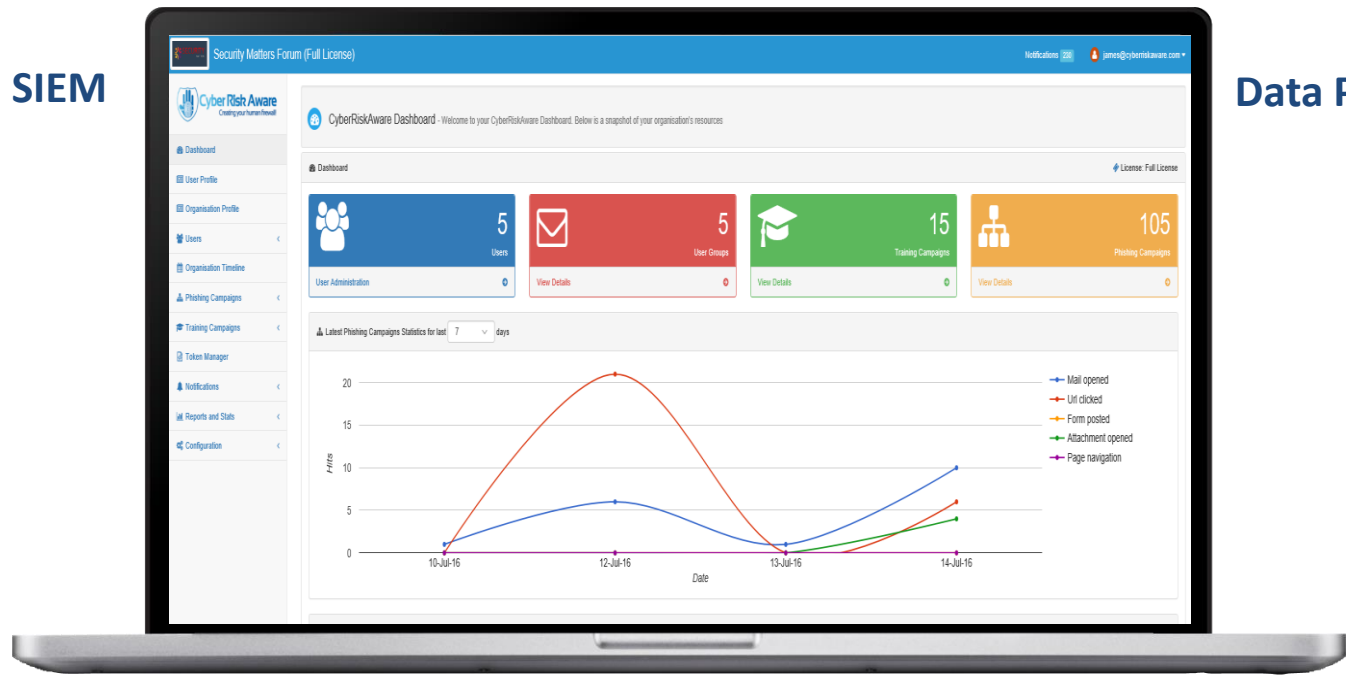
Data Protection



Active Directory



Firewalls



“Real Time” Education Response Automation



# Human Firewall Tips




- Run Regular Mock Phishing and Training Campaigns
- Track Results to Measure Awareness and Benchmark against Peers
- Interactive Training Content – Max 10 minutes in duration
- Deliver Instant Education to Detected Risky Behaviour
- Outsource to a 3<sup>rd</sup> party who are trained educators and security experts



**Cyber Risk Aware**  
Creating your human firewall!

# THANK YOU



Stephen Burke, CISM  
Founder & CEO  
[stephen@CyberRiskAware.com](mailto:stephen@CyberRiskAware.com)  
 [@cyberriskaware](https://twitter.com/cyberriskaware)



# Cost of a Phish

**MEDIAN** cost of a Single Phishing attack is

**\$136,000**

(Based on lost productivity of 10,000 users and a data breach of between 100,000 to 1,000,000 records)

**90%**

likelihood that a single phish will cost \$8,000+

Business Impact of a Single Phish by Industry :

- Professional, Scientific & Tech - \$ 196k
- Information Industries - \$ 171k
- Entertainment - \$ 140k
- Healthcare - \$ 139k
- Financial Services & Insurance - \$ 137k
- Retail - \$ 128k
- Energy - \$ 98k
- Manufacturing - \$ 89k
- Education - \$ 70k

(Based primarily on the difference in click rates and relative likelihood of a data breach)